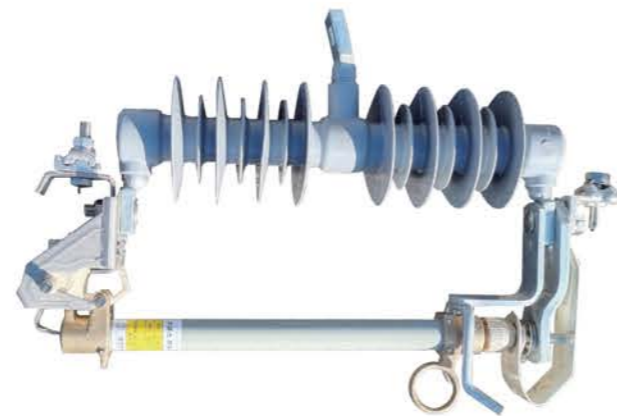


# Cutout Switch

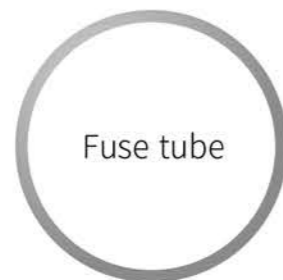
PA□C series

## ▶ HIGH RELIABILITY

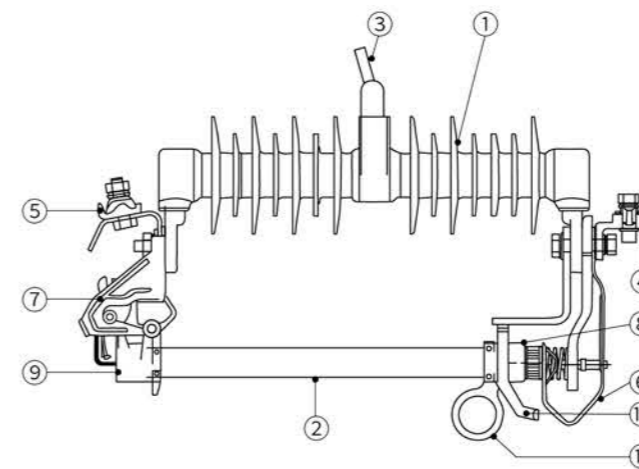
- COS is rugged and strong
- Fuse tube is held at the upper contact by a self-aligning spring loaded detent type latch
- Upper and lower contact and the silver-clad fuse tube cap
- Easy installation and operation



## ▶ FEATURE



## ▶ STRUCTURE



- ① Birdproof-Design Insulator
- ② Fuse Tube
- ③ Bracket
- ④ Parallel-Groove Connector
- ⑤ Parallel-Groove Connector
- ⑥ Recoil Bar
- ⑦ Trunion Casting
- ⑧ Upper Contacts
- ⑨ Sturdy Ferrules
- ⑩ Loadbuster Guide
- ⑪ Attachment Hooks

## ▶ SPECIFICATIONS

Rated voltage (kV)	25.8
Rated normal frequency (Hz)	50 / 60
Rated normal current (A)	100
Rated breaking capacity (kA)	10 / 12
Rated lightning impulse withstand voltage (kV)	125
Rated power-frequency withstand voltage (kV)	36 / 45